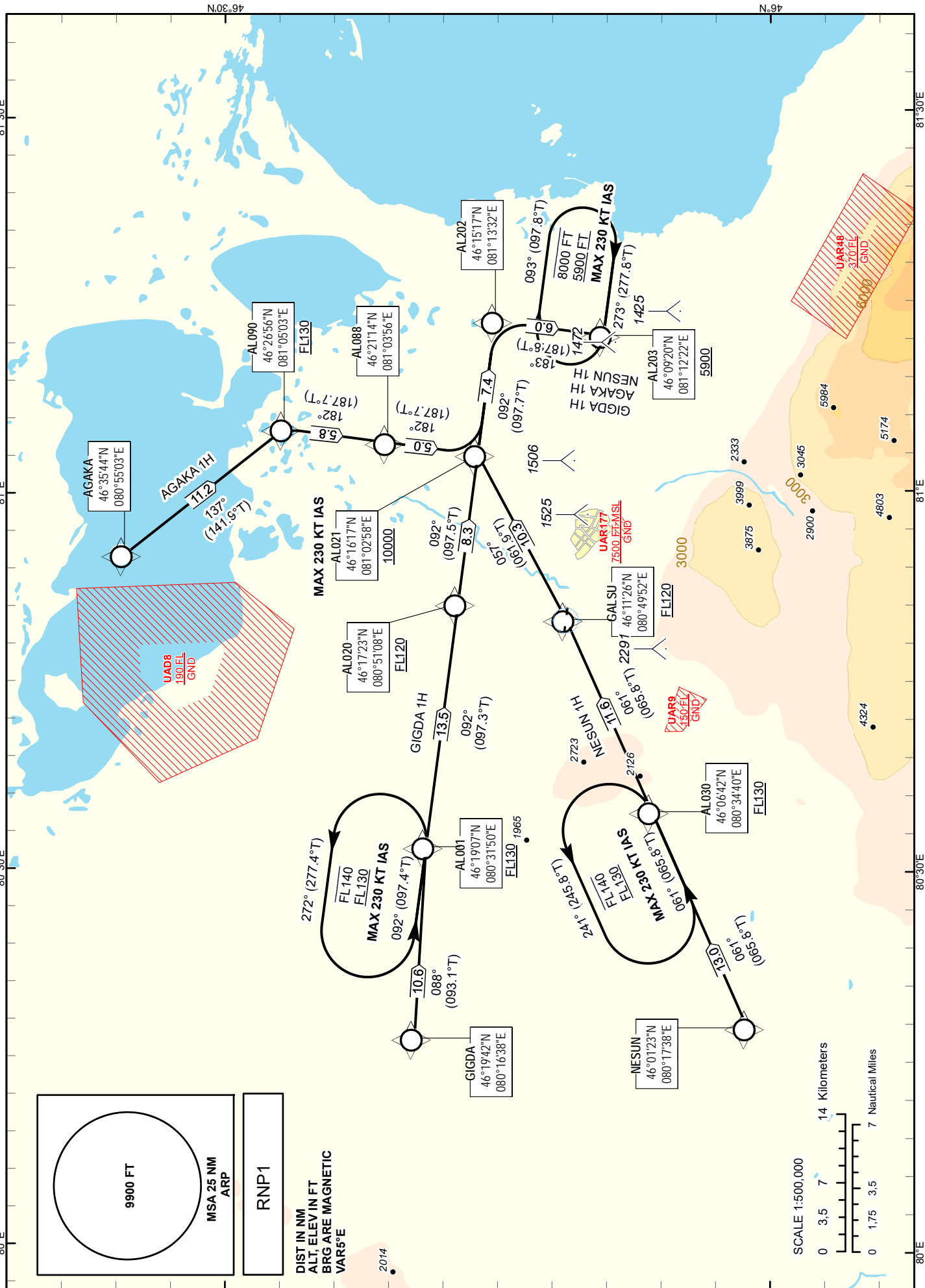


**USHARAL  
RWY 27**



TABULAR DESCRIPTION

AGAKA 1H RWY 27									
Serial Number	Path Desc.	Waypoint Identifier	Fly - over	Course °M(°T)	DIST (nm)	Turn Dir	Altitude FT	Speed KT	NAV. SPEC.
010	IF	AGAKA	-	-	-	-	-	-	RNP1
020	TF	AL090	-	137(141.9)	11.2	-	+FL130	-	RNP1
030	TF	AL088	-	182(187.7)	5.8	R	-	-	RNP1
040	TF	AL021	-	182(187.7)	5.0	-	+10000	-230	RNP1
050	TF	AL202	-	092(097.7)	7.4	L	-	-	RNP1
060	TF	AL203	-	183(187.8)	6.0	R	+5900	-	RNP1
070	HM	AL203	-	273(277.8)	6.0	R	+5900 -8000	-230	RNP1

WAYPOINT LIST

AGAKA 1H RWY 27			
Waypoint Identifier		Coordinates	
AGAKA		463544.00N	0805503.00E
AL090		462655.67N	0810502.71E
AL088		462113.91N	0810355.85E
AL021		461616.71N	0810257.90E
AL202		461516.80N	0811332.01E
AL203		460920.29N	0811221.57E

TABULAR DESCRIPTION

GIGDA 1H RWY 27									
Serial Number	Path Desc.	Waypoint Identifier	Fly - over	Course °M(°T)	DIST (nm)	Turn Dir	Altitude FT	Speed KT	NAV. SPEC.
010	IF	GIGDA	-	-	-	-	-	-	RNP1
020	TF	AL001	-	088(093.1)	10.6	-	+FL130	-	RNP1
030	TF	AL020	-	092(097.3)	13.5	R	+FL120	-	RNP1
040	TF	AL021	-	092(097.5)	8.3	-	+10000	-230	RNP1
050	TF	AL202	-	092(097.7)	7.4	-	-	-	RNP1
060	TF	AL203	-	183(187.8)	6.0	R	+5900	-	RNP1
070	HM	AL203		273(277.8)	6.0	R	+5900 -8000	-230	RNP1

WAYPOINT LIST

GIGDA 1H			
Waypoint Identifier		Coordinates	
GIGDA		461942.00N	0801638.00E
AL001		461907.20N	0803150.26E
AL020		461722.56N	0805107.79E
AL021		461616.71N	0810257.90E
AL202		461516.80N	0811332.01E
AL203		460920.29N	0811221.57E

TABULAR DESCRIPTION

NESUN 1H RWY 27									
Serial Number	Path Desc.	Waypoint Identifier	Fly - over	Course °M(°T)	DIST (nm)	Turn Dir	Altitude FT	Speed KT	NAV. SPEC.
010	IF	NESUN	-	-	-	-	-	-	RNP1
020	TF	AL030	-	061(065.8)	13.0	-	+FL130	-	
030	TF	GALSU	-	061(065.8)	11.6	-	+FL120	-	RNP1
040	TF	AL021	-	057(061.9)	10.3	L	+10000	-230	RNP1
050	TF	AL202	-	092(097.7)	7.4	R	-	-	RNP1
060	TF	AL203	-	183(187.8)	6.0	R	+5900	-	RNP1
070	HM	AL203		273(277.8)	6.0	R	+5900 -8000	-230	RNP1

WAYPOINT LIST

NESUN 1H			
Waypoint Identifier		Coordinates	
NESUN		460123.00N	0801738.00E
AL030		460641.84N	0803440.33E
GALSU		461126.00N	0804952.00E
AL021		461616.71N	0810257.90E
AL202		461516.80N	0811332.01E
AL203		460920.29N	0811221.57E